

6mm



**MADE FROM  
92% RECYCLED  
TIRE RUBBER!**

## ACOUSTICAL UNDERLAYMENT FOR TILE, STONE AND CARPET

**IMPACTA ProBase 6mm** floor underlayment is made from recycled rubber tires. ProBase 6 is used under tile/marble, carpet and wood flooring. ProBase is excellent for use in lightweight wood frame construction due to its weight & mass. ProBase 6 is 3/16" thick and comes in rolls 4' x 25' (100 sq ft rolls).

Typical uses include; apartments, homes, condos, schools, hospitals and any areas where reduction from structural impact noise through the floor to ceiling assembly is required. ProBase underlayment can be installed over concrete, gypsum topping and structural sound plywood sub floors.

### SPECIFICATIONS

- Thickness: 6mm
- Density (ASTM D-792): 43 lbs. cubic ft.
- Standard width: 48" wide
- Roll length: 25' long
- Weight: 1.0 lb psf
- Hardness A Shore-Durometer: 40-55

### FEATURES

- 92% recycled content, qualifies for up to 5 Leed Points
- IIC rating 50+
- Easy to install, 4' x 25' rolls
- Sound control underlay for tile, stone, & hardwood



[www.soundseal.com](http://www.soundseal.com)



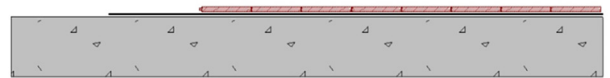
**ACOUSTIC PERFORMANCE ON BACK**

6mm



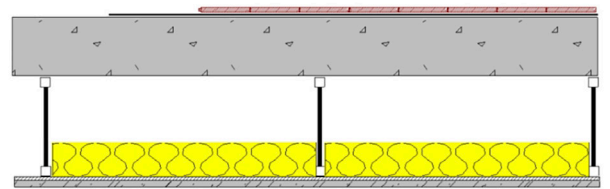
## 6mm IMPACTA ProBase ACOUSTICAL TEST

**6mm IMPACTA ProBase** Floated Engineered hardwood over 6mm ProBase over 6" slab



**IIC/FIIC RATING: 22**

**6mm IMPACTA ProBase** Floated Engineered hardwood over 6mm ProBase over 1 1/2" gypsum topping over 16" TJI – 24 centers RC1 channel – 1 layer 5/8 GWB



**IIC/FIIC RATING: IIC 57**

**MADE FROM  
92% RECYCLED  
TIRE RUBBER!**

