



**Test Method:** This test method is in accordance with American National Society for Testing and Materials Standard designation: E1007 Standard Test Method for Field Measurement of Tapping Machine Impact Sound Transmission Through Floor-Ceiling Assemblies and Associated Support Structures to determine the Field IIC as per ASTM E989.

Equipment and instrumentation used for the measurements included a Norsonic tapping machine and a Larson-Davis 2900B Type 1 real-time sound level meter (serial no. 0975, calibration February 24, 2006). Calibration was with a Larson Davis CAL200 serial number 2306. This measurement technique followed the procedures detailed in the ASTM standard mentioned above.

**Specimen Description:** ¾" tongue and groove hardwood flooring  
¾" Advantech sub-floor  
4 mm Paladin  
10" concrete slab

Sample placed on concrete slab located over framed space with dimensions 9'3" L x 9'2" W x 11'9". A column was located in the span where the samples were placed.

**Specimen Size:** 4'x4' sample

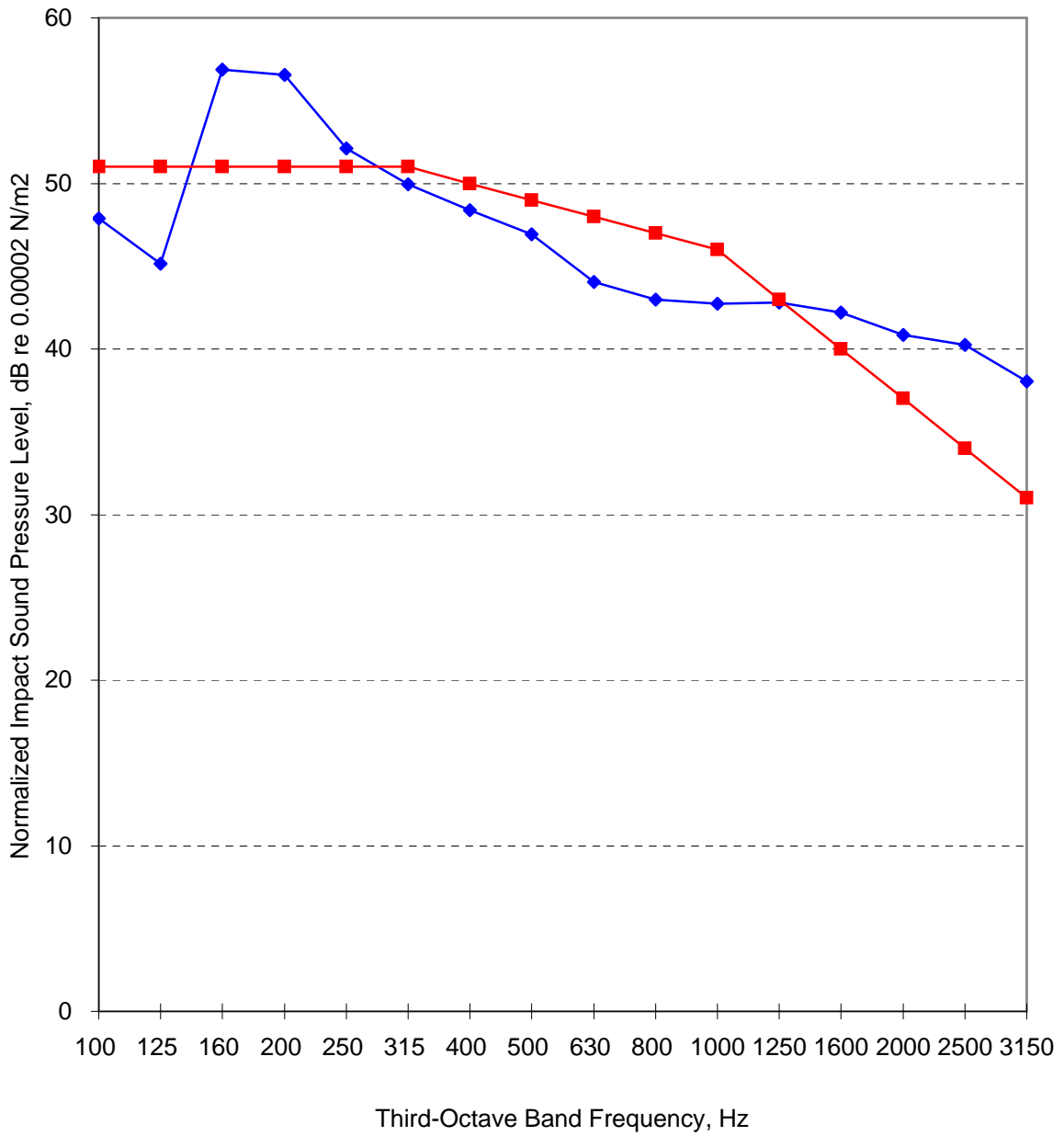
**Conditioning:** None

**Test Results:** FIIC = 61  
Chart is provided on the following page

# FIIC

Paladin

FIIC: 61

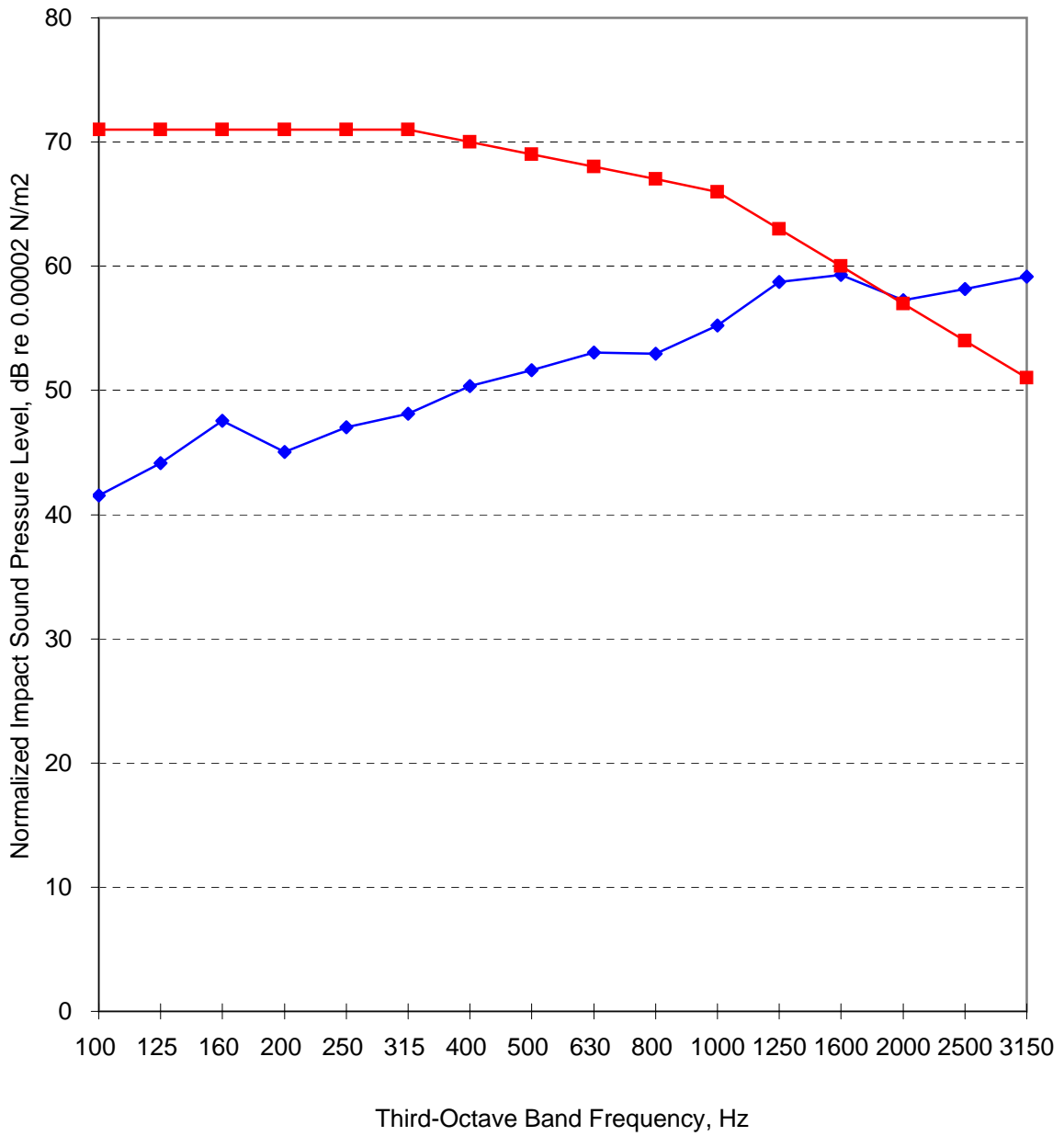


◆ Impact SPL Curve ■ Limiting IIC Contour

# FIIC

10" Concrete

FIIC: 41



◆ Impact SPL Curve    ■ Limiting IIC Contour