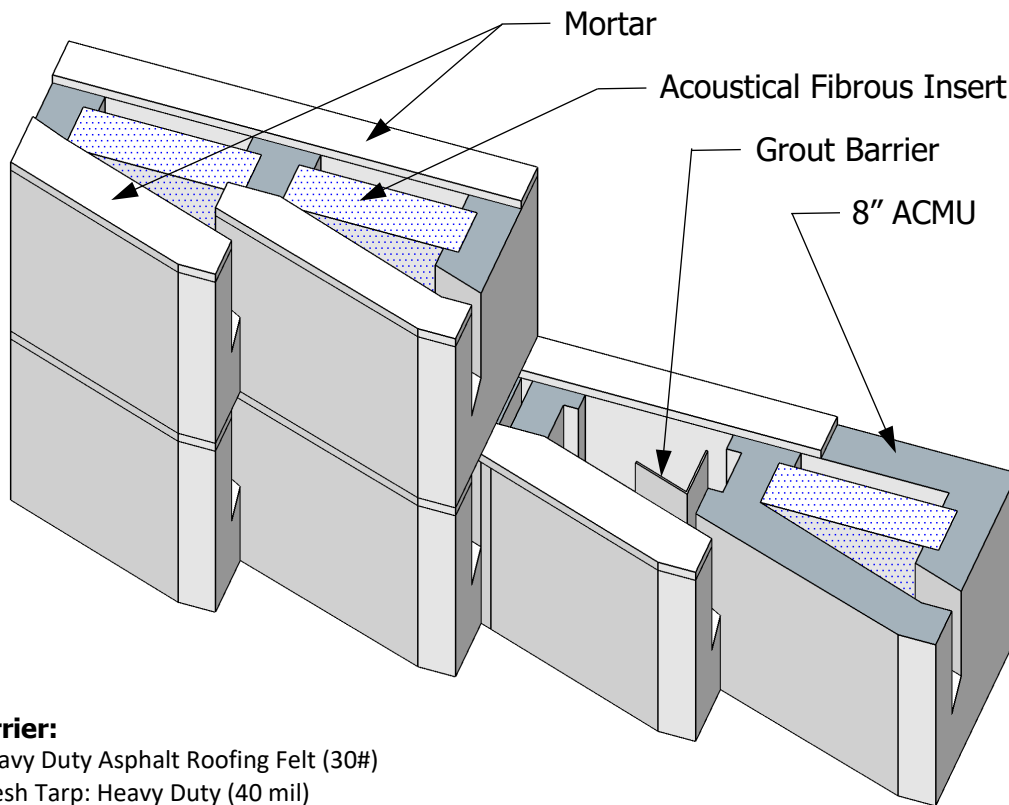


## Grouting 8" Acoustade™ & Sound Cell® Acoustical Concrete Masonry Units (ACMUs)

12" Acoustade™ and 12" Sound Cell® units may be vertical reinforced and grouted with the addition of field installed Grout Shields to partition the 12" ACMU cavity into forward and rear compartments.

The cavity spaces in 8" Acoustade™ [shown below] and 8" Sound Cell® units are not large enough to partition with Grout Shields. If vertical reinforcement is required, the Acoustical Fibrous Insert must be removed and the aperture opening mortared shut, or a Grout Barrier added, to prevent the grout mixture from seeping out through the aperture opening during the grout pour.



### Grout Barrier:

- Heavy Duty Asphalt Roofing Felt (30#)
- Mesh Tarp: Heavy Duty (40 mil)
- Butyl Flashing Tape: Self-adhesive roll flashing (20 mil)

The Grout Barrier should be 4" wide and creased in the middle along its length. Field install appropriate lengths of the Grout Barrier as required. If the Grout Barrier is not a self-adhesive type, secure the Grout Barrier to the ACMUs with mortar or adhesive. For high-lift grouting, a double layer of the Grout Barrier may be required.

