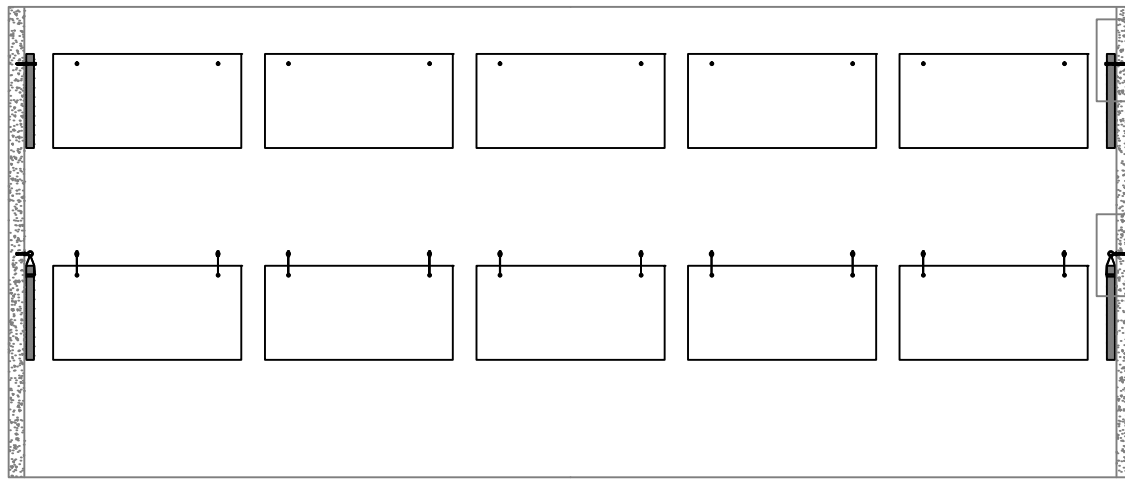
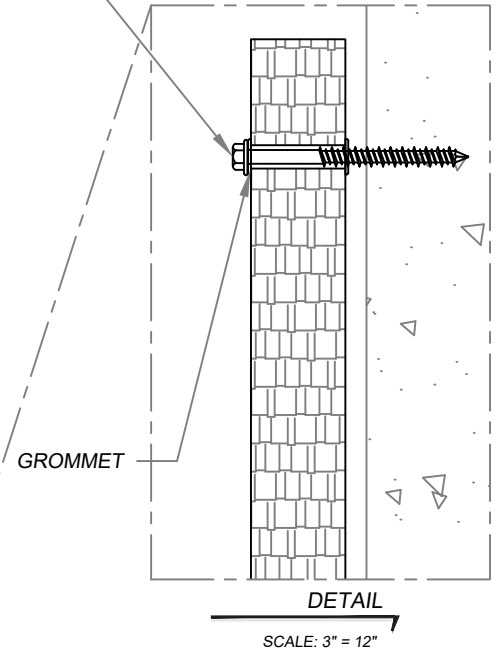
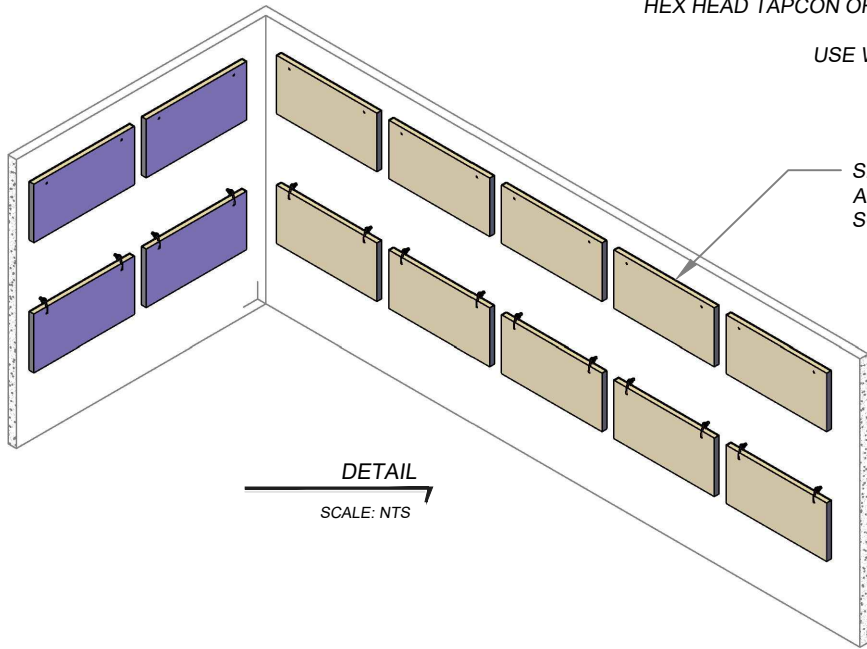
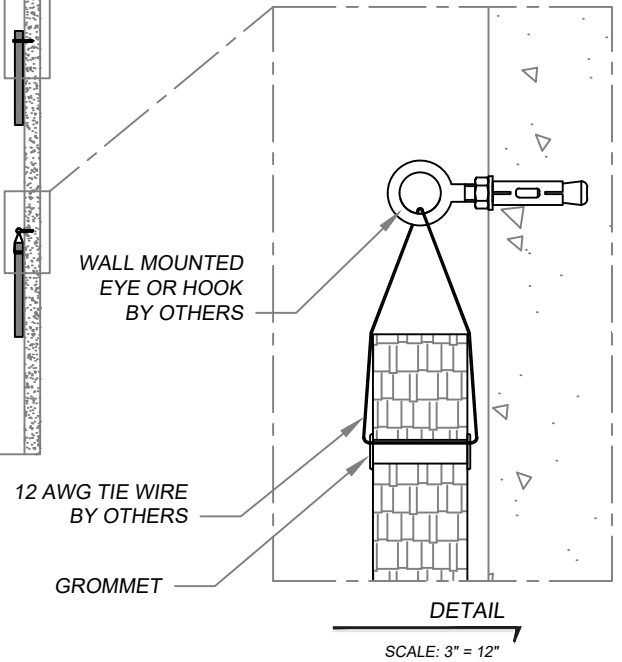


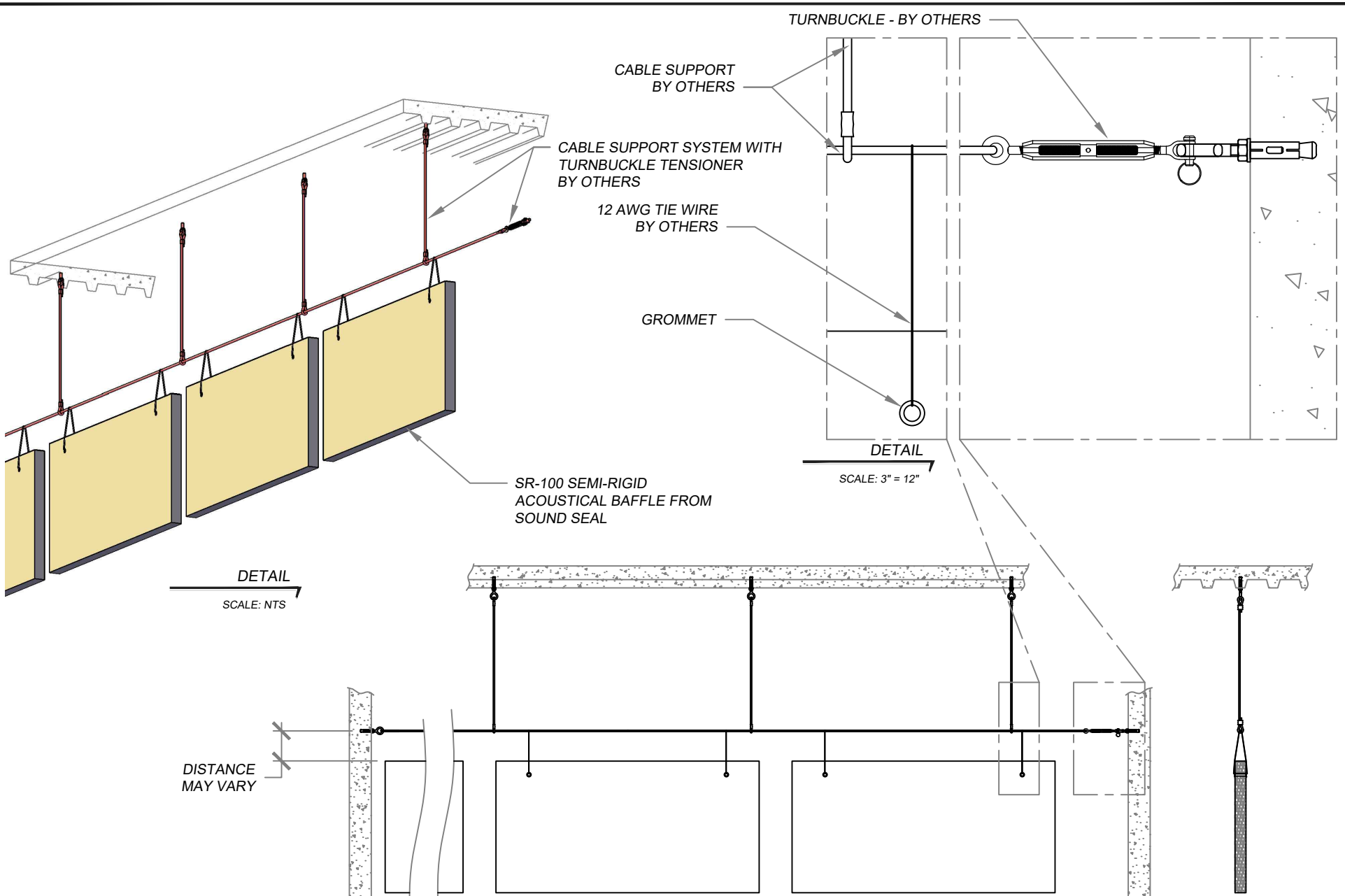
HEX HEAD TAPCON OR OTHER WALL MOUNTED CONCRETE SCREW - BY OTHERS
 NOTE: DO NOT OVER-TIGHTEN OR CRUSH PANEL
 USE WASHER IF HEX HEAD IS SMALLER THAN GROMMET HOLE Ø



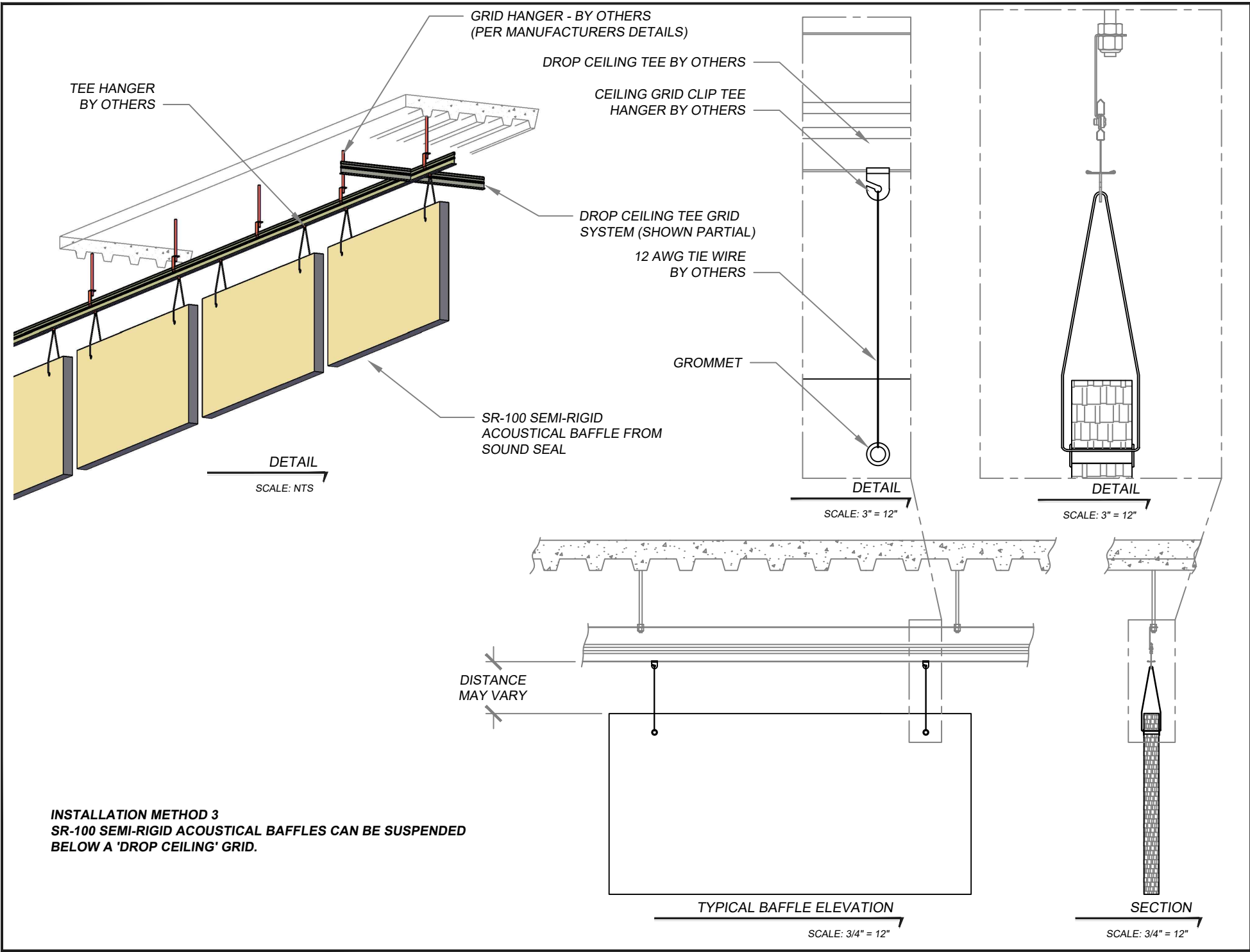
TYPICAL BAFFLE ELEVATION
 SCALE: 1/2" = 12"



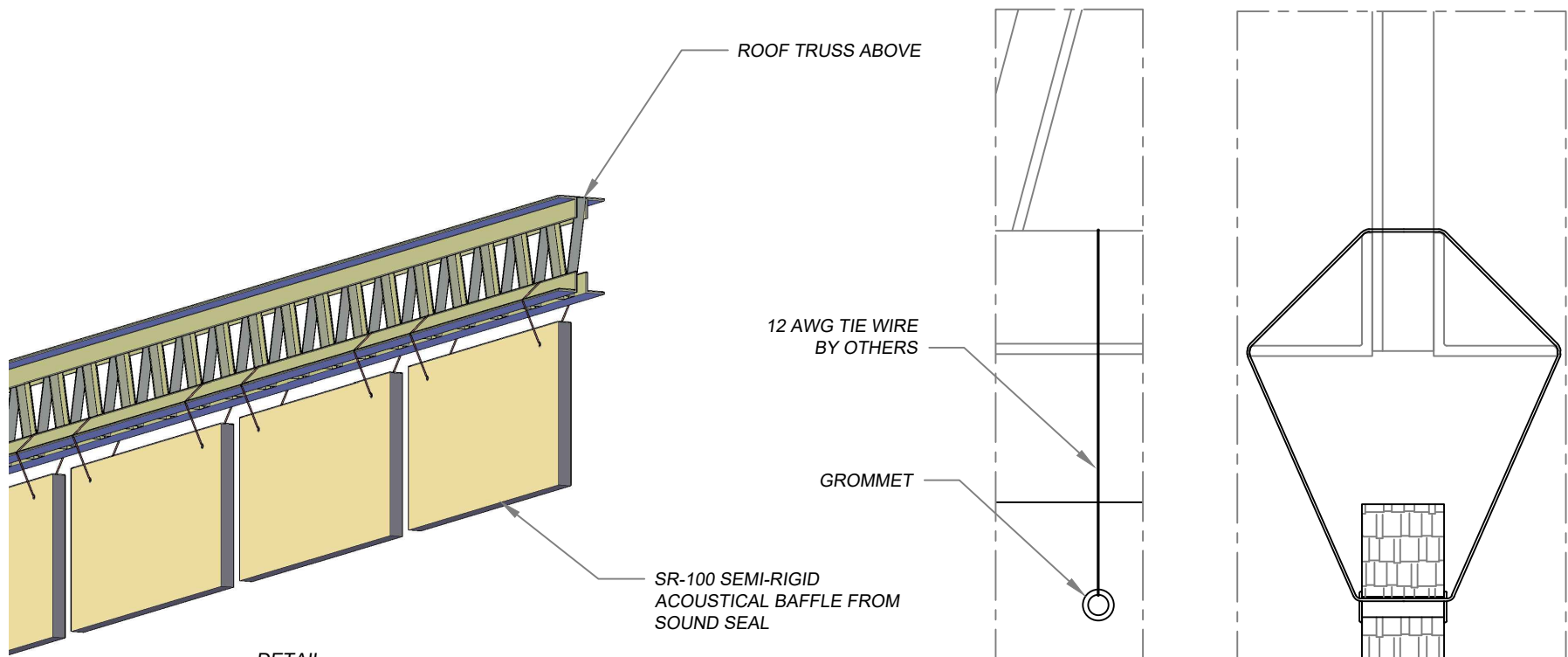
INSTALLATION METHOD 5
 SR-100 SEMI-RIGID ACOUSTICAL BAFFLES CAN BE MOUNTED TO WALLS, EITHER DIRECTLY (PER TOP ROW) OR BELOW A WALL MOUNTED EYEBOLT OR HOOK (PER BOTTOM ROW)



INSTALLATION METHOD 4
SR-100 SEMI-RIGID ACOUSTICAL
BAFFLES CAN BE SUSPENDED
BELOW A CABLE SUPPORT SYSTEM.



INSTALLATION METHOD 3
 SR-100 SEMI-RIGID ACOUSTICAL BAFFLES CAN BE SUSPENDED
 BELOW A 'DROP CEILING' GRID.



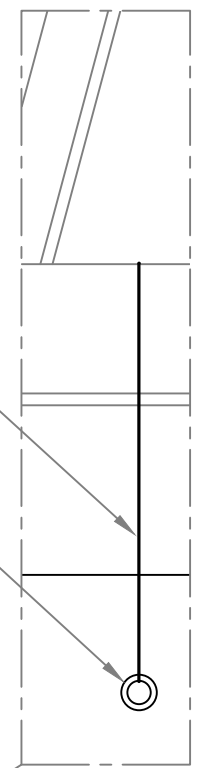
DETAIL
SCALE: NTS

ROOF TRUSS ABOVE

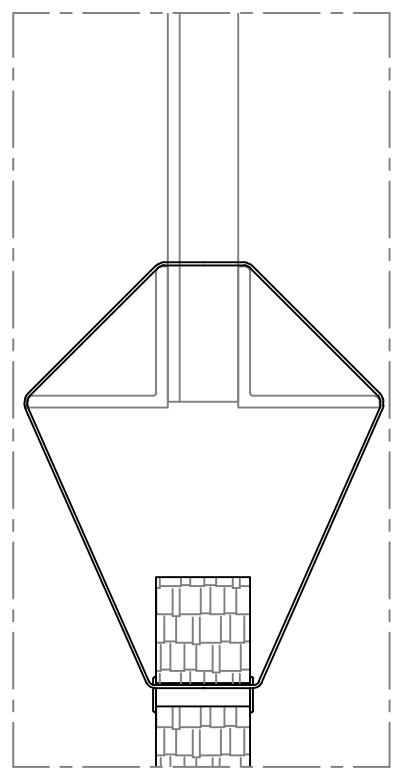
12 AWG TIE WIRE
BY OTHERS

GROMMET

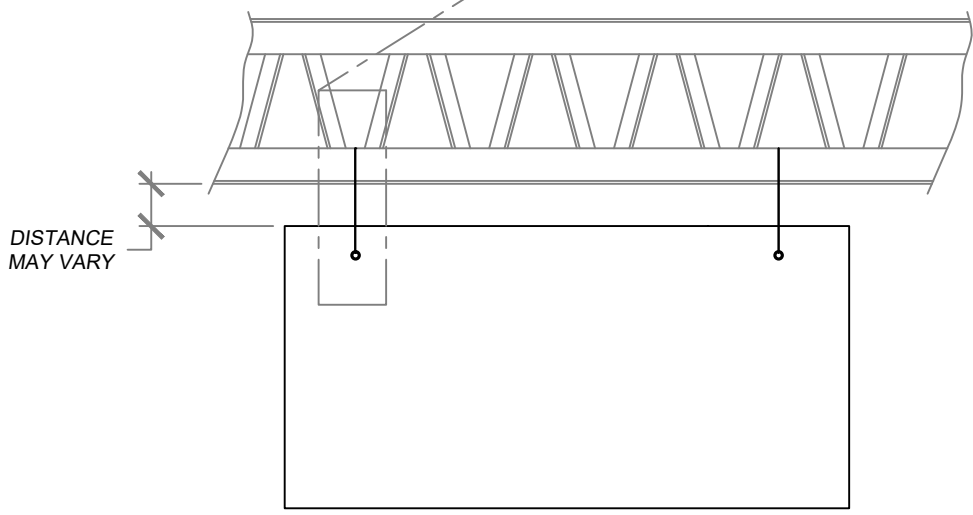
SR-100 SEMI-RIGID
ACOUSTICAL BAFFLE FROM
SOUND SEAL



DETAIL
SCALE: 3" = 12"

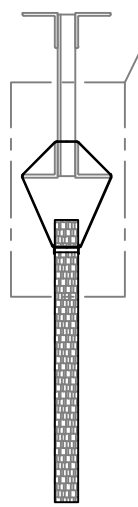


DETAIL
SCALE: 3" = 12"



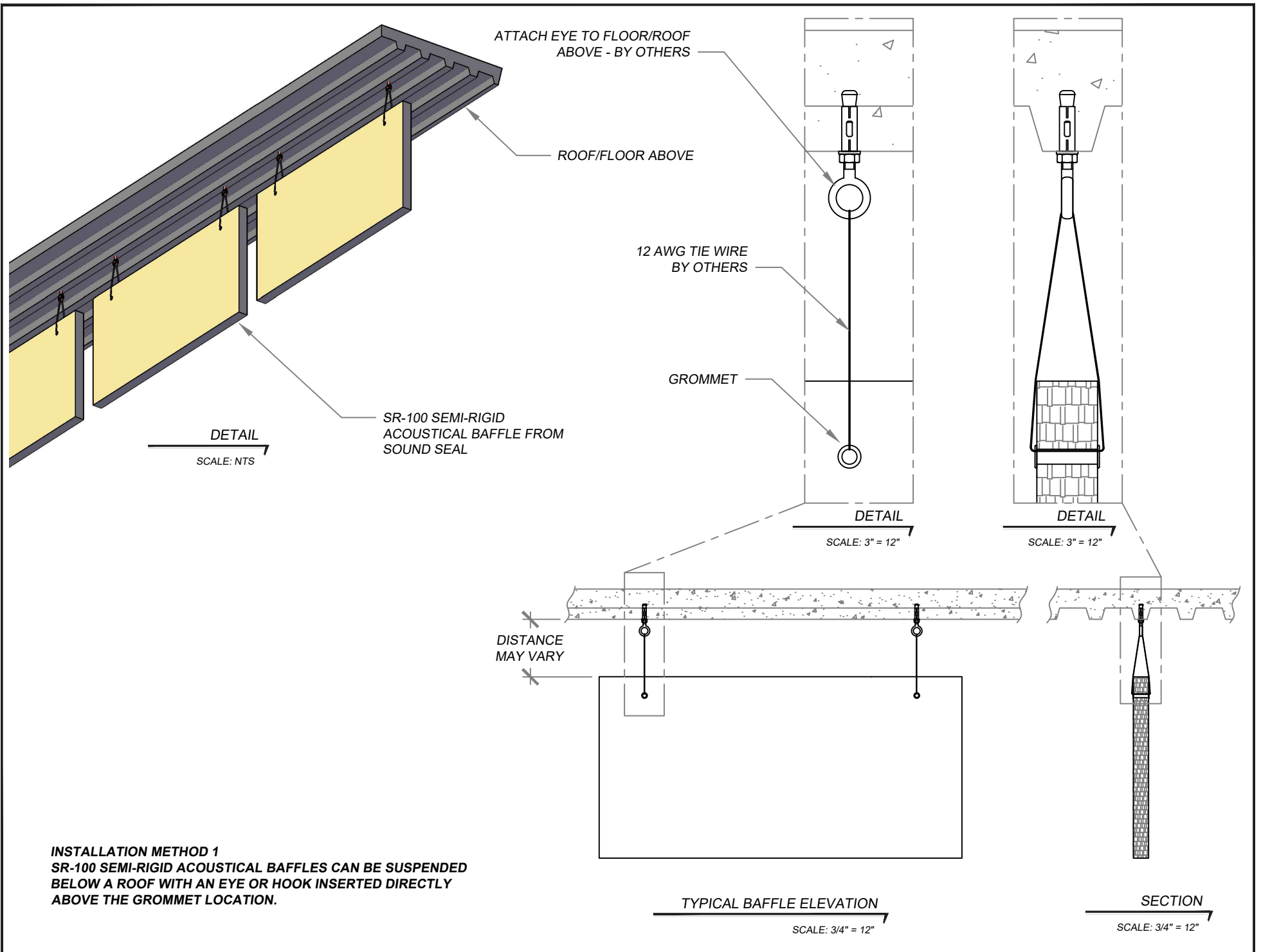
DISTANCE
MAY VARY

TYPICAL BAFFLE ELEVATION
SCALE: 3/4" = 12"



SECTION
SCALE: 3/4" = 12"

INSTALLATION METHOD 2
SR-100 SEMI-RIGID ACOUSTICAL BAFFLES
CAN BE SUSPENDED BELOW A ROOF TRUSS.



INSTALLATION METHOD 1
 SR-100 SEMI-RIGID ACOUSTICAL BAFFLES CAN BE SUSPENDED BELOW A ROOF WITH AN EYE OR HOOK INSERTED DIRECTLY ABOVE THE GROMMET LOCATION.