

Test Method: This test method is in accordance with American National Society for Testing and Materials Standard designation: E1007 Standard Test Method for Field Measurement of Tapping Machine Impact Sound Transmission Through Floor-Ceiling Assemblies and Associated Support Structures to determine the Field IIC as per ASTM E989.

Equipment and instrumentation used for the measurements included a Norsonic tapping machine and a Larson-Davis 2900B Type 1 real-time sound level meter (serial no. 0975, calibration February 24, 2006). Calibration was with a Larson Davis CAL200 serial number 2306. This measurement technique followed the procedures detailed in the ASTM standard mentioned above.

Specimen Description: ¾" tongue and groove hardwood flooring
¾" Advantech sub-floor
1" Sound Eater
10" concrete slab

Sample nailed to underlayment and in turn floated on concrete slab located over framed space with dimensions 9'3" L x 9'2" W x 11'9". A column was located in the span where the samples were placed.

Specimen Size: 4'x4' sample

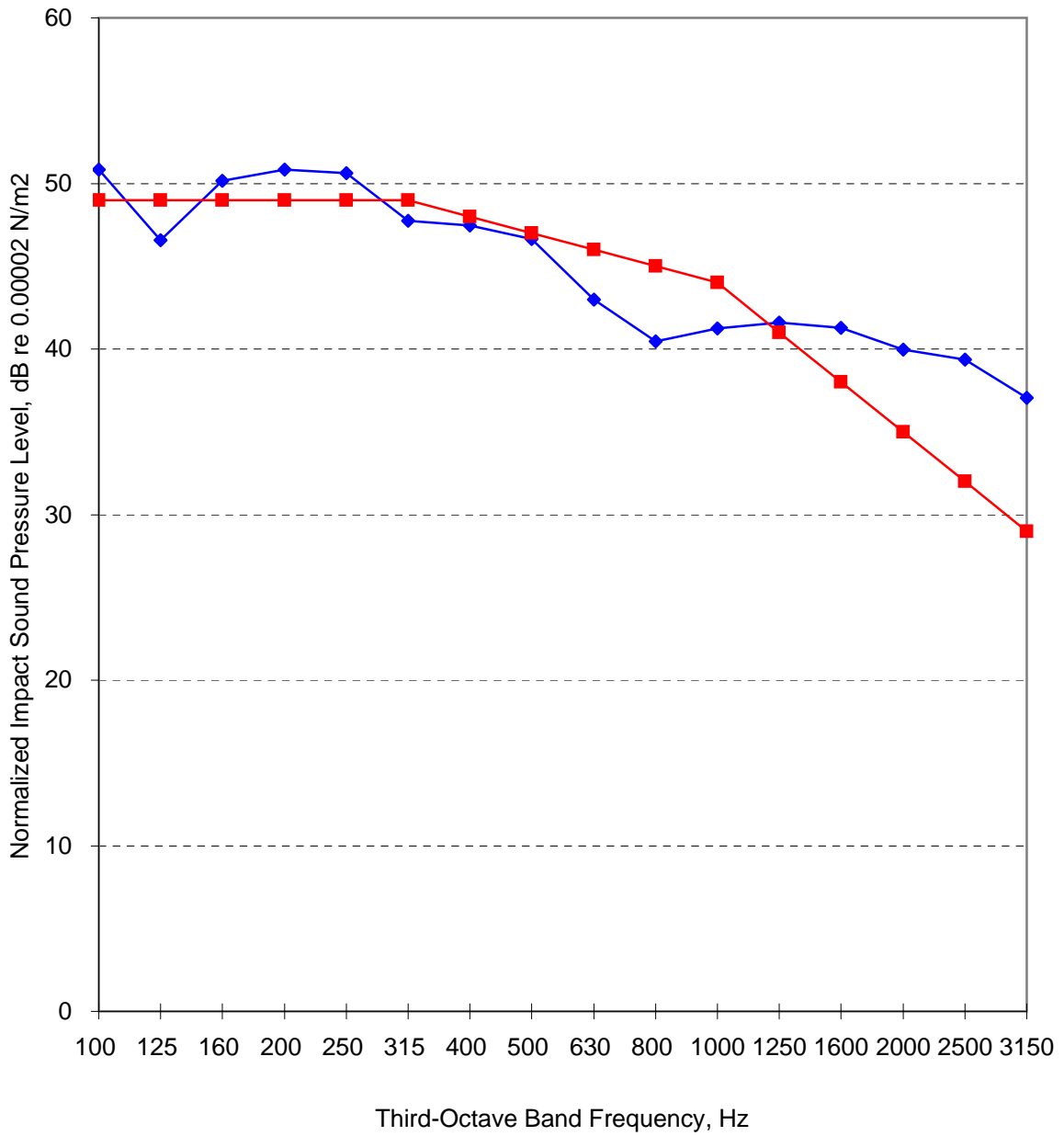
Conditioning: None

Test Results: FIIC = 63
Chart is provided on the following page

FIIC

Sound Eater

FIIC: 63

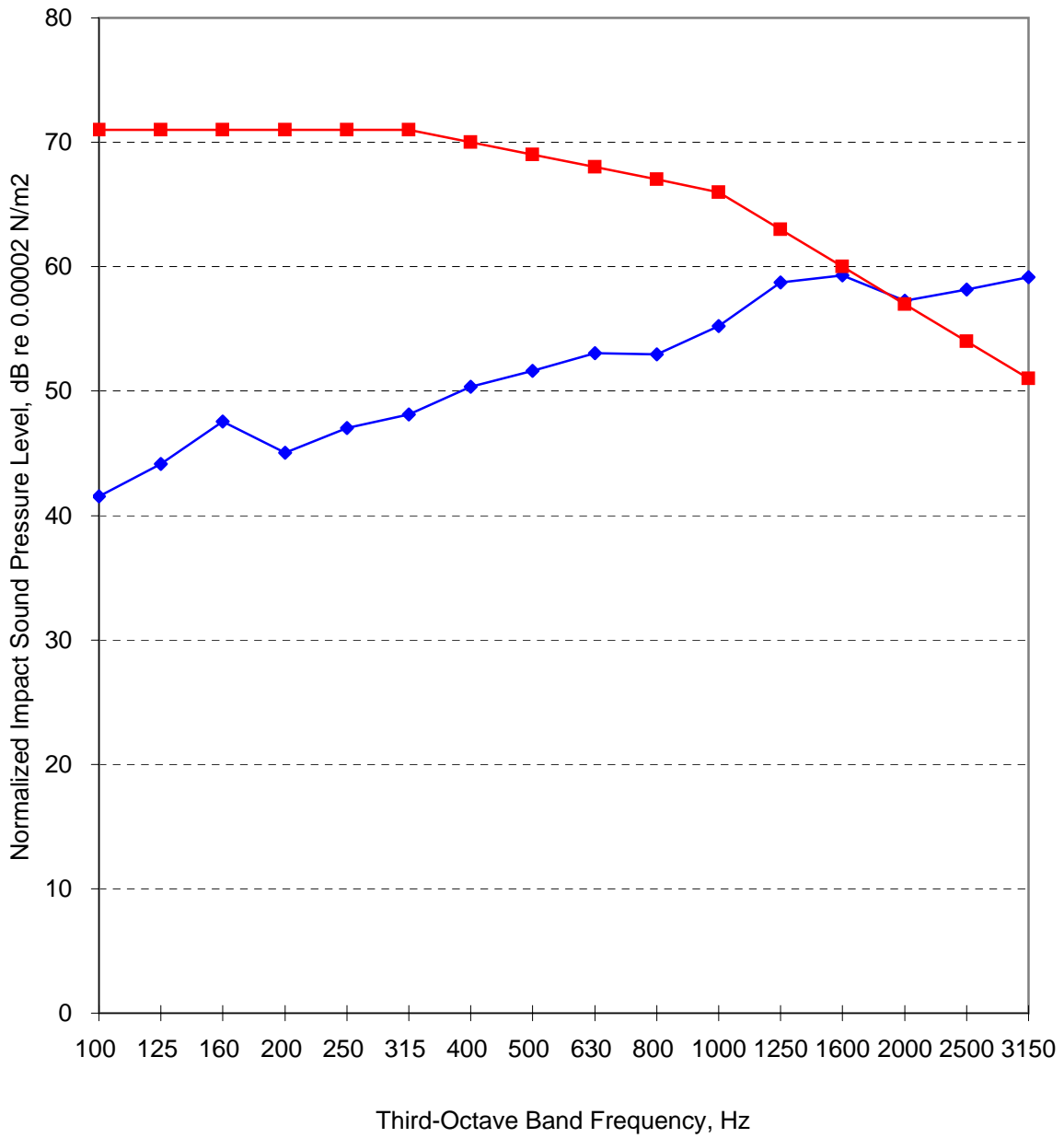


◆ Impact SPL Curve ■ Limiting IIC Contour

FIIC

10" Concrete

FIIC: 41



◆ Impact SPL Curve ■ Limiting IIC Contour