

1512 S BATAVIA AVENUE
GENEVA, IL 60134
630-232-0104

Test Report

www.riverbankacoustics.com

FOUNDED 1918 BY
WALLACE CLEMENT SABINE

SPONSOR: **Sound Seal**
Agawam, MA

Sound Absorption
RAL™-A22-358

CONDUCTED: 2022-08-18

Page 1 of 8

ON: Vivid BSC-2" - Indoor/Outdoor Curtain Panel

TEST METHODOLOGY

Riverbank Acoustical Laboratories™ is accredited by the U.S. Department of Commerce, National Institute of Standards and Technology (NIST) under the National Voluntary Laboratory Accreditation Program (NVLAP) as an ISO 17025:2017 Laboratory (NVLAP Lab Code: 100227-0) and for this test procedure. The test reported in this document conformed explicitly with ASTM C423-22: "Standard Test Method for Sound Absorption and Sound Absorption Coefficients by the Reverberation Room Method." The specimen mounting was performed according to ASTM E795-16: "Standard Practices for Mounting Test Specimens During Sound Absorption Tests." A description of the measurement procedure and room specifications are available upon request. The results presented in this report apply to the sample as received from the test sponsor.

SPECIMEN MEASUREMENTS & TEST CONDITIONS

The test specimen was designated by the sponsor as Vivid BSC-2" - Indoor/Outdoor Curtain Panel. Through a full external visual inspection performed on the test specimen, Riverbank personnel verified the following information:

Test Specimen

Dimensions: 2 blankets @ 1245 mm (49 in.) by 2743 mm (108 in.)
Thickness: 25 mm (1 in.)
Overall Weight: 47.17 kg (104 lbs)
Mass per Unit Volume: 272 kg/m³ (17.0 lbs/ft³)

1512 S BATAVIA AVENUE
GENEVA, IL 60134
630-232-0104

Test Report

www.riverbankacoustics.com

FOUNDED 1918 BY
WALLACE CLEMENT SABINE

Sound Seal
2022-08-18

RAL™-A22-358
Page 2 of 8

Overall Specimen Properties

Size: 2.49 m (98.0 in) wide by 2.74 m (108.0 in) long
Thickness: 0.03 m (1.0 in)
Weight: 47.17 kg (104.0 lbs)
Mass per Unit Area: 6.91 kg/m² (1.41 lbs/ft²)
Calculation Area: 6.828 m² (73.5 ft²)

Test Environment

Room Volume: 291.98 m³
Temperature: 21.7 °C ± 0.0 °C (Requirement: ≥ 10 °C and ≤ 5 °C change)
Relative Humidity: 56.5 % ± 0.0 % (Requirement: ≥ 40 % and ≤ 5 % change)
Barometric Pressure: 98.7 kPa (Requirement not defined)

MOUNTING METHOD

Type A Mounting: The test specimen was laid directly against the test surface. Per sponsor request, the perimeter edges were left exposed, as would be typical of a field installation of the product under test.

1512 S BATAVIA AVENUE
GENEVA, IL 60134
630-232-0104

Test Report

www.riverbankacoustics.com

FOUNDED 1918 BY
WALLACE CLEMENT SABINE

Sound Seal
2022-08-18

RAL™-A22-358
Page 3 of 8

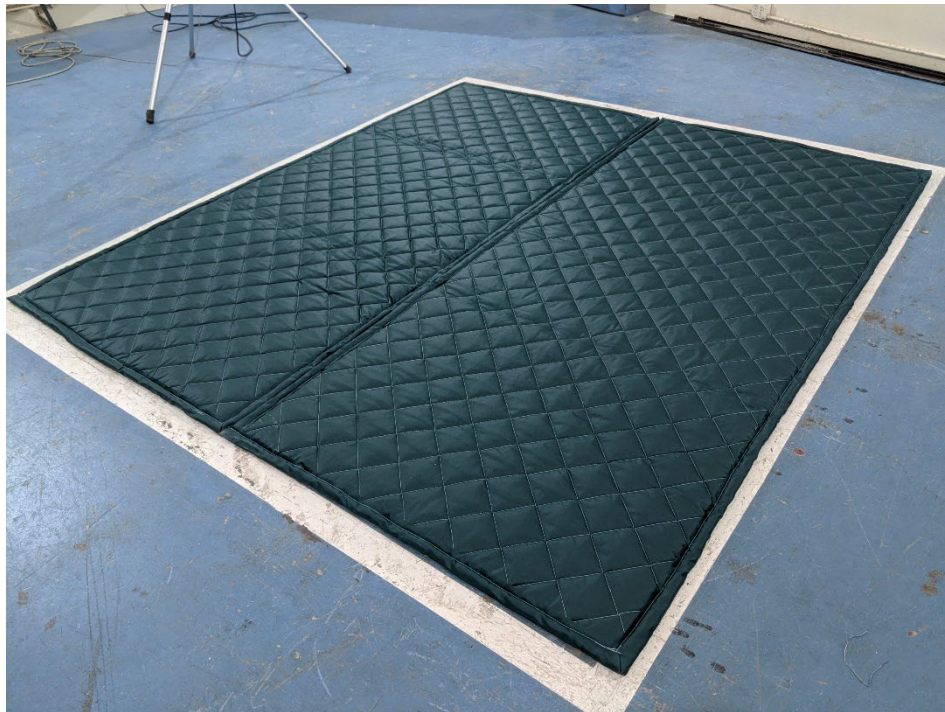


Figure 1 – Specimen mounted in test chamber



Figure 2 – Detail of specimen materials

1512 S BATAVIA AVENUE
 GENEVA, IL 60134
 630-232-0104

Test Report

www.riverbankacoustics.com

FOUNDED 1918 BY
 WALLACE CLEMENT SABINE

Sound Seal
 2022-08-18

RAL™-A22-358
 Page 4 of 8

TEST RESULTS

Specimen total absorption and absorption coefficient are tabulated at the eighteen standard frequencies. A graphic presentation of the data and additional information appear on the following pages.

1/3 Octave Center Frequency (Hz)	Total Absorption (m ²)	Total Absorption (Sabins)	Absorption Coefficient
100	0.76	8.23	0.11
** 125	1.09	11.74	0.16
160	2.23	23.98	0.33
200	4.20	45.23	0.62
** 250	3.21	34.57	0.47
315	2.04	22.00	0.30
400	2.24	24.13	0.33
** 500	2.99	32.17	0.44
630	4.20	45.23	0.62
800	5.49	59.10	0.80
** 1000	5.94	63.94	0.87
1250	5.47	58.91	0.80
1600	4.55	49.00	0.67
** 2000	3.83	41.27	0.56
2500	3.05	32.87	0.45
3150	2.50	26.96	0.37
** 4000	2.02	21.76	0.30
5000	1.87	20.12	0.27

SAA = 0.58
NRC = 0.60

1512 S BATAVIA AVENUE
GENEVA, IL 60134
630-232-0104

Test Report

www.riverbankacoustics.com

FOUNDED 1918 BY
WALLACE CLEMENT SABINE

Sound Seal
2022-08-18

RAL™-A22-358
Page 5 of 8

TEST RESULTS (continued)

The sound absorption average (SAA) is defined in ASTM C423-17 Section 3.1.1 as the arithmetic average of the sound absorption coefficients of a material for the twelve one-third octave bands from 200 Hz through 2500 Hz, inclusive, rounded to the nearest integer multiple of 0.01.

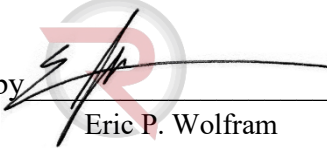
The noise reduction coefficient (NRC) is defined from previous versions of ASTM C423 as the arithmetic average of the sound absorption coefficients at 250 Hz, 500 Hz, 1000 Hz, and 2000 Hz, rounded to the nearest integer multiple of 0.05.

Tested by 

Marc Sciaky
Senior Experimentalist

Report by 

Keith Kimberling
Test Engineer

Approved by 

Eric P. Wolfram
Laboratory Manager

1512 S BATAVIA AVENUE
GENEVA, IL 60134
630-232-0104

Test Report

www.riverbankacoustics.com

FOUNDED 1918 BY
WALLACE CLEMENT SABINE

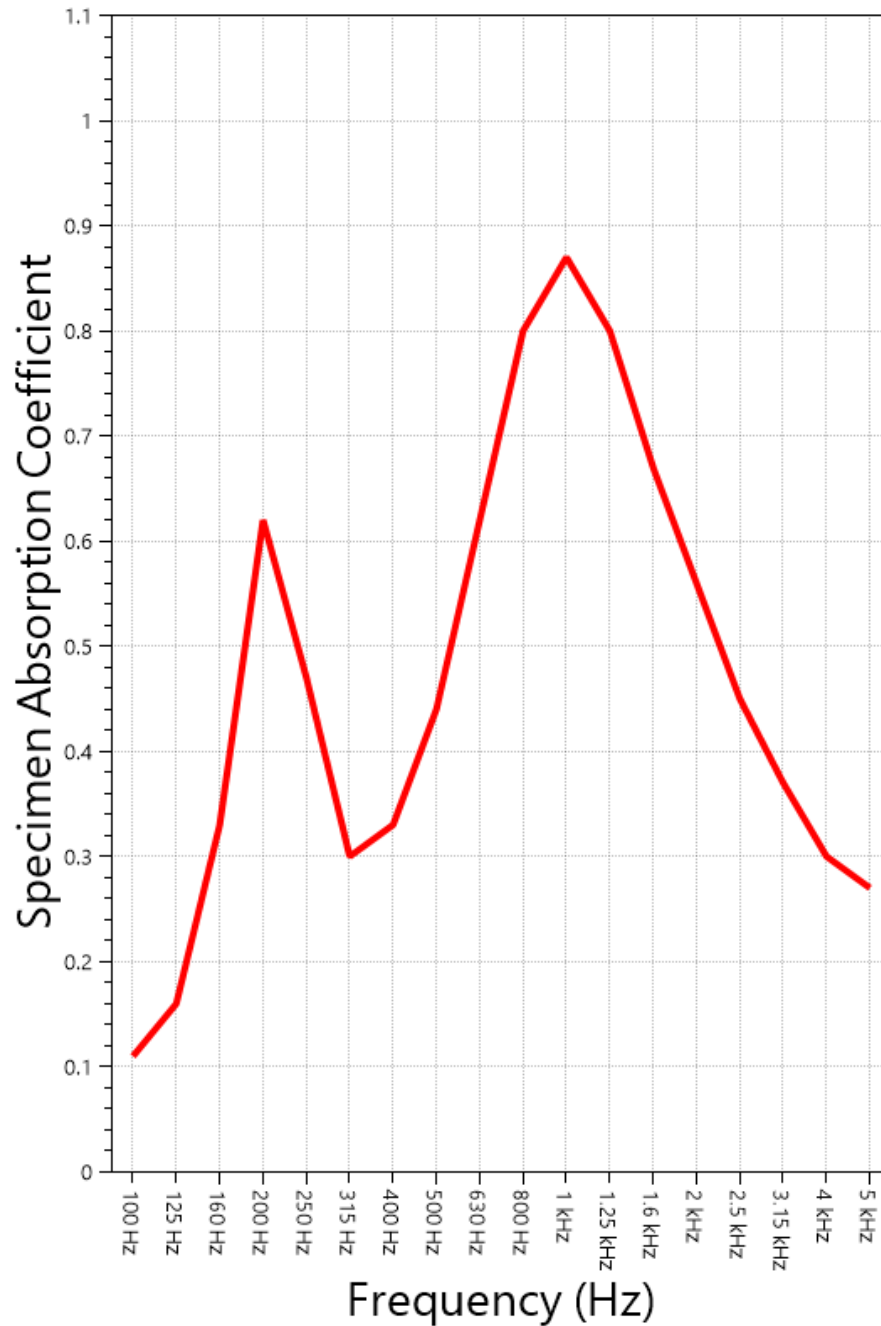
Sound Seal
2022-08-18

RAL™-A22-358

Page 6 of 8

SOUND ABSORPTION REPORT

Vivid BSC-2" - Indoor/Outdoor Curtain Panel



SAA = 0.58

NRC = 0.60



RIVERBANK ACOUSTICAL LABORATORIES IS ACCREDITED BY NVLAP (LAB CODE 100227-0) FOR ACOUSTICAL TESTING SERVICES IN ACCORDANCE WITH ISO/IEC 17025:2017 AND FOR THIS PROCEDURE. THIS REPORT MUST NOT BE USED BY THE CLIENT TO CLAIM PRODUCT CERTIFICATION, APPROVAL, OR ENDORSEMENT BY RAL, NVLAP, NIST, OR ANY AGENCY OF THE U.S. GOVERNMENT. THIS REPORT SHALL NOT BE MODIFIED WITHOUT THE WRITTEN APPROVAL OF RAL. THE RESULTS REPORTED APPLY ONLY TO THE SPECIFIC SAMPLE SUBMITTED FOR TESTING; RAL ASSUMES NO RESPONSIBILITY FOR THE PERFORMANCE OF ANY OTHER SAMPLE.

1512 S BATAVIA AVENUE
 GENEVA, IL 60134
 630-232-0104

Test Report

www.riverbankacoustics.com

FOUNDED 1918 BY
 WALLACE CLEMENT SABINE

Sound Seal
 2022-08-18

RAL™-A22-358
 Page 7 of 8

APPENDIX A: Extended Frequency Range Data

Specimen: Vivid BSC-2” - Indoor/Outdoor Curtain Panel (See Full Report)

The following non-accredited data were obtained in accordance with ASTM C423-22, but extend beyond the defined frequency range of 100Hz to 5,000Hz. These unofficial results are representative of the RAL test environment only and intended for research & comparison purposes.

1/3 Octave Band Center Frequency (Hz)	Total Absorption (Sabins)	Absorption Coefficient
31.5	8.91	0.12
40	-2.36	-0.03
50	-13.87	-0.19
63	-7.64	-0.10
80	12.68	0.17
100	8.23	0.11
125	11.74	0.16
160	23.98	0.33
200	45.23	0.62
250	34.57	0.47
315	22.00	0.30
400	24.13	0.33
500	32.17	0.44
630	45.23	0.62
800	59.10	0.80
1000	63.94	0.87
1250	58.91	0.80
1600	49.00	0.67
2000	41.27	0.56
2500	32.87	0.45
3150	26.96	0.37
4000	21.76	0.30
5000	20.12	0.27
6300	15.72	0.21
8000	15.52	0.21
10000	15.72	0.21
12500	16.85	0.23



RIVERBANK ACOUSTICAL LABORATORIES IS ACCREDITED BY NVLAP (LAB CODE 100227-0) FOR ACOUSTICAL TESTING SERVICES IN ACCORDANCE WITH ISO/IEC 17025:2017 AND FOR THIS PROCEDURE. THIS REPORT MUST NOT BE USED BY THE CLIENT TO CLAIM PRODUCT CERTIFICATION, APPROVAL, OR ENDORSEMENT BY RAL, NVLAP, NIST, OR ANY AGENCY OF THE U.S. GOVERNMENT. THIS REPORT SHALL NOT BE MODIFIED WITHOUT THE WRITTEN APPROVAL OF RAL. THE RESULTS REPORTED APPLY ONLY TO THE SPECIFIC SAMPLE SUBMITTED FOR TESTING; RAL ASSUMES NO RESPONSIBILITY FOR THE PERFORMANCE OF ANY OTHER SAMPLE.

1512 S BATAVIA AVENUE
GENEVA, IL 60134
630-232-0104

Test Report

www.riverbankacoustics.com

FOUNDED 1918 BY
WALLACE CLEMENT SABINE

Sound Seal
2022-08-18

RAL™-A22-358
Page 8 of 8

APPENDIX B: Instruments of Traceability

Specimen: Vivid BSC-2” - Indoor/Outdoor Curtain Panel (See Full Report)

<u>Description</u>	<u>Model</u>	<u>Serial Number</u>	<u>Date of Certification</u>	<u>Calibration Due</u>
System 1	Type 3160-A-042	3160-106968	2022-07-12	2023-07-12
Bruel & Kjaer Mic And Preamp A	Type 4943-B-001	2311428	2021-09-30	2022-09-30
Bruel & Kjaer Pistonphone	Type 4228	2781248	2022-07-22	2023-07-22
EXTECH Hygro 959	SD700	A099959	2022-03-22	2023-03-22

APPENDIX C: Revisions to Original Test Report

Specimen: Vivid BSC-2” - Indoor/Outdoor Curtain Panel (See Full Report)

<u>Date</u>	<u>Revision</u>
2022-08-29	Original report issued

END