

1512 S BATAVIA AVENUE
GENEVA, IL 60134
630-232-0104

Test Report

www.riverbankacoustics.com

FOUNDED 1918 BY
WALLACE CLEMENT SABINE

SPONSOR: **Sound Seal**
Agawam, MA

Sound Absorption
RAL™-A22-353

CONDUCTED: 2022-08-18

Page 1 of 7

ON: Aerial Exterior Grade Acoustical Baffle

TEST METHODOLOGY

Riverbank Acoustical Laboratories™ is accredited by the U.S. Department of Commerce, National Institute of Standards and Technology (NIST) under the National Voluntary Laboratory Accreditation Program (NVLAP) as an ISO 17025:2017 Laboratory (NVLAP Lab Code: 100227-0) and for this test procedure. The test reported in this document conformed explicitly with ASTM C423-22: "Standard Test Method for Sound Absorption and Sound Absorption Coefficients by the Reverberation Room Method." The specimen mounting was performed according to ASTM E795-16: "Standard Practices for Mounting Test Specimens During Sound Absorption Tests." A description of the measurement procedure and room specifications are available upon request. The results presented in this report apply to the sample as received from the test sponsor.

SPECIMEN MEASUREMENTS & TEST CONDITIONS

The test specimen was designated by the sponsor as Aerial Exterior Grade Acoustical Baffle. Through a full external visual inspection performed on the test specimen, Riverbank personnel verified the following information:

Test Specimen

Dimensions: 8 baffles @ 610 mm (24 in.) by 1219 mm (48 in.)
Thickness: 51 mm (2 in.)
Overall Weight: 12.47 kg (27.5 lbs)
Mass per Unit Volume: Approx. 41 kg/m³ (2.6 lbs/ft³)

1512 S BATAVIA AVENUE
GENEVA, IL 60134
630-232-0104

Test Report

www.riverbankacoustics.com

FOUNDED 1918 BY
WALLACE CLEMENT SABINE

Sound Seal
2022-08-18

RAL™-A22-353
Page 2 of 7

Physical Measurements (per object)

Dimensions: 0.61 m (24.0 in) wide by 1.22 m (48.0 in) long

Thickness: 0.05 m (2.0 in)

Weight: 1.56 kg (3.44 lbs)

Test Environment

Room Volume: 291.98 m³

Temperature: 21.7 °C ± 0.1 °C (Requirement: ≥ 10 °C and ≤ 5 °C change)

Relative Humidity: 57.15 % ± 0.7 % (Requirement: ≥ 40 % and ≤ 5 % change)

Barometric Pressure: 98.9 kPa (Requirement not defined)

Each sound absorbing object had an exposed surface area of 1.67 m² (18 ft²). The total exposed surface area of all sound-absorbing objects was 13.4 m² (144 ft²). The array of objects covered 6.41 m² (69 ft²) of the horizontal test surface (total treated area).

MOUNTING METHOD

Type J Mounting: The specimen is an array of 8 spaced sound absorbing objects suspended from cables such that the closest face is located approximately 826 mm (32.5 in.) from the horizontal test surface. This approximates the mounting method of a typical ceiling baffle installation. The objects were distributed in four rows of two objects each, with rows spaced 762 mm (30 in.) on center, and objects in each row spaced 305 mm (12 in.) apart.

1512 S BATAVIA AVENUE
GENEVA, IL 60134

630-232-0104

Test Report

www.riverbankacoustics.com

FOUNDED 1918 BY
WALLACE CLEMENT SABINE

Sound Seal
2022-08-18

RAL™-A22-353
Page 3 of 7



Figure 1 – Specimen mounted in test chamber

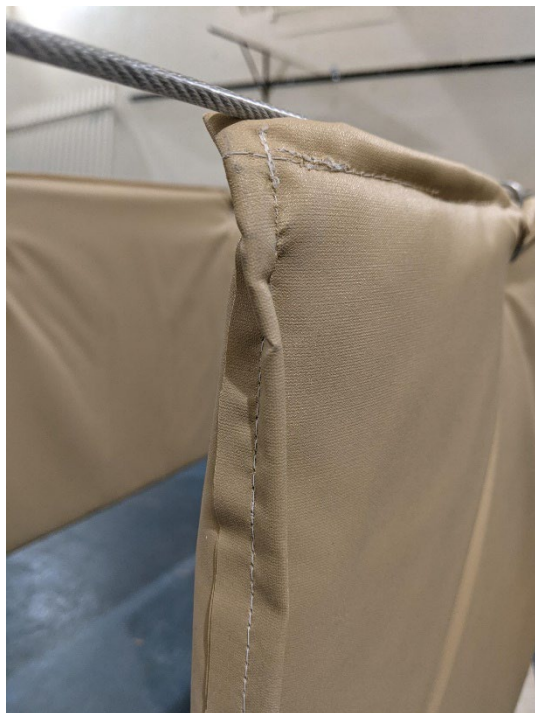


Figure 2 – Detail of specimen materials

1512 S BATAVIA AVENUE
GENEVA, IL 60134
630-232-0104

Test Report

www.riverbankacoustics.com

FOUNDED 1918 BY
WALLACE CLEMENT SABINE

Sound Seal
2022-08-18

RAL™-A22-353
Page 4 of 7

TEST RESULTS

Note: There is currently no standardized method for calculating Absorption Coefficients from spaced object absorbers. The sound absorption performance of spaced object absorbers should not be compared directly with specimens tested as a single rectangular area (e.g. mounting types A, E, etc.).

1/3 Octave Center Frequency (Hz)	Total Absorption		Absorption per Object	
	(m ²)	(Sabins)	(m ² / Object)	(Sabins / Object)
100	0.89	9.54	0.11	1.19
** 125	1.07	11.57	0.13	1.45
160	1.69	18.14	0.21	2.27
200	2.76	29.76	0.35	3.72
** 250	3.87	41.63	0.48	5.20
315	5.95	64.02	0.74	8.00
400	7.27	78.26	0.91	9.78
** 500	8.71	93.79	1.09	11.72
630	8.21	88.38	1.03	11.05
800	6.39	68.76	0.80	8.59
** 1000	4.73	50.94	0.59	6.37
1250	3.55	38.26	0.44	4.78
1600	2.62	28.17	0.33	3.52
** 2000	1.98	21.32	0.25	2.67
2500	1.69	18.22	0.21	2.28
3150	1.45	15.57	0.18	1.95
** 4000	1.27	13.71	0.16	1.71
5000	1.11	11.91	0.14	1.49


Tested by


Marc Sciaky
Senior Experimentalist

Report by


Keith Kimberling
Test Engineer

Approved by


Eric P. Wolfram
Laboratory Manager

1512 S BATAVIA AVENUE
GENEVA, IL 60134
630-232-0104

Test Report

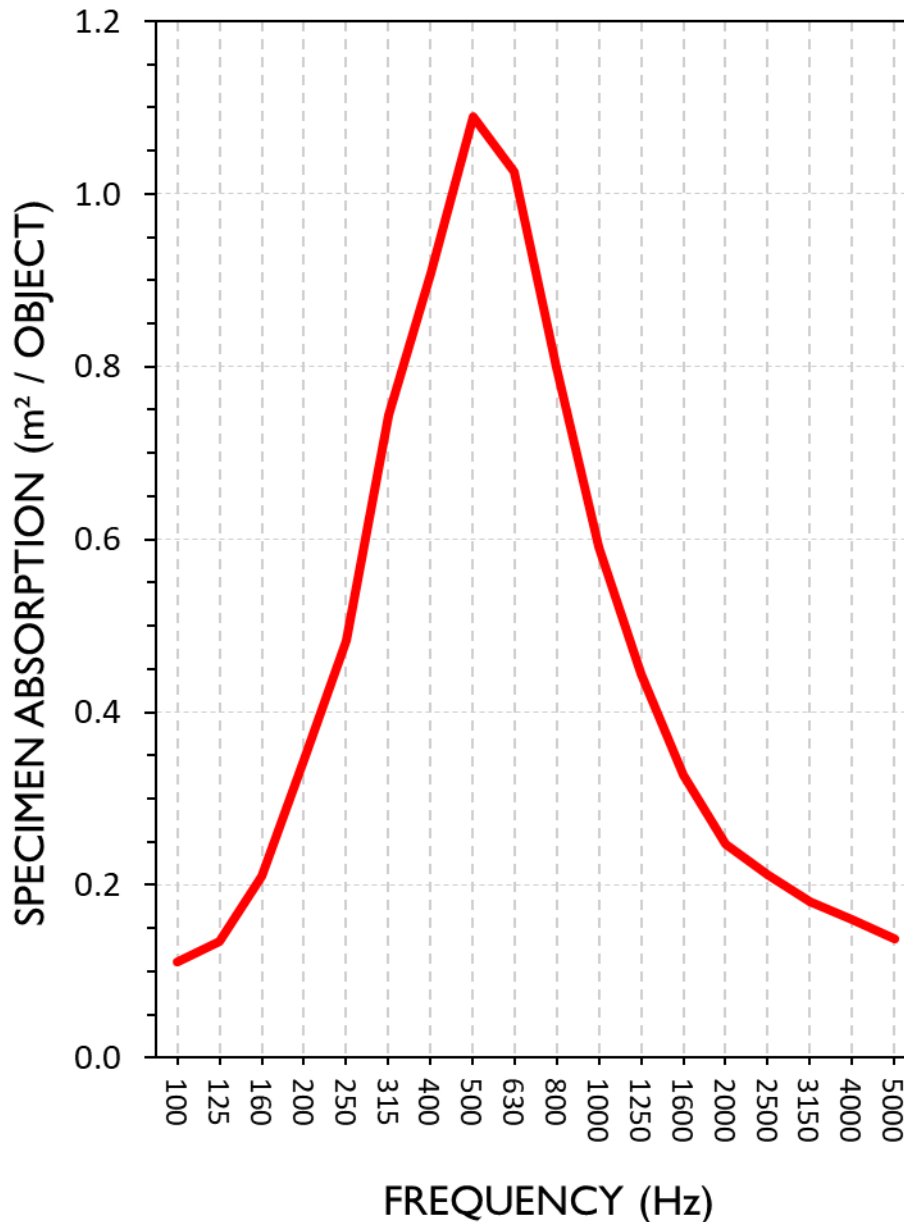
www.riverbankacoustics.com

FOUNDED 1918 BY
WALLACE CLEMENT SABINE

Sound Seal
2022-08-18

RAL™-A22-353
Page 5 of 7

SOUND ABSORPTION REPORT
Aerial Exterior Grade Acoustical Baffle



1512 S BATAVIA AVENUE
 GENEVA, IL 60134
 630-232-0104

Test Report

www.riverbankacoustics.com

FOUNDED 1918 BY
 WALLACE CLEMENT SABINE

Sound Seal
 2022-08-18

RAL™-A22-353
 Page 6 of 7

APPENDIX A: Extended Frequency Range Data

Specimen: Aerial Exterior Grade Acoustical Baffle (See Full Report)

The following non-accredited data were obtained in accordance with ASTM C423-22, but extend beyond the defined frequency range of 100Hz to 5,000Hz. These unofficial results are representative of the RAL test environment only and intended for research & comparison purposes.

1/3 Octave Band Center Frequency (Hz)	Total Absorption		Absorption per Object	
	(m ²)	(Sabins)	(m ² / Object)	(Sabins / Object)
31.5	0.55	5.88	0.07	0.74
40	0.84	9.06	0.11	1.13
50	-2.39	-25.69	-0.30	-3.21
63	-0.73	-7.81	-0.09	-0.98
80	0.08	0.86	0.01	0.11
100	0.89	9.54	0.11	1.19
125	1.07	11.57	0.13	1.45
160	1.69	18.14	0.21	2.27
200	2.76	29.76	0.35	3.72
250	3.87	41.63	0.48	5.20
315	5.95	64.02	0.74	8.00
400	7.27	78.26	0.91	9.78
500	8.71	93.79	1.09	11.72
630	8.21	88.38	1.03	11.05
800	6.39	68.76	0.80	8.59
1000	4.73	50.94	0.59	6.37
1250	3.55	38.26	0.44	4.78
1600	2.62	28.17	0.33	3.52
2000	1.98	21.32	0.25	2.67
2500	1.69	18.22	0.21	2.28
3150	1.45	15.57	0.18	1.95
4000	1.27	13.71	0.16	1.71
5000	1.11	11.91	0.14	1.49
6300	0.90	9.71	0.11	1.21
8000	0.82	8.86	0.10	1.11
10000	0.80	8.63	0.10	1.08
12500	0.72	7.73	0.09	0.97



RIVERBANK ACOUSTICAL LABORATORIES IS ACCREDITED BY NVLAP (LAB CODE 100227-0) FOR ACOUSTICAL TESTING SERVICES IN ACCORDANCE WITH ISO/IEC 17025:2017 AND FOR THIS PROCEDURE. THIS REPORT MUST NOT BE USED BY THE CLIENT TO CLAIM PRODUCT CERTIFICATION, APPROVAL, OR ENDORSEMENT BY RAL, NVLAP, NIST, OR ANY AGENCY OF THE U.S. GOVERNMENT.

THIS REPORT SHALL NOT BE MODIFIED WITHOUT THE WRITTEN APPROVAL OF RAL. THE RESULTS REPORTED APPLY ONLY TO THE SPECIFIC SAMPLE SUBMITTED FOR TESTING; RAL ASSUMES NO RESPONSIBILITY FOR THE PERFORMANCE OF ANY OTHER SAMPLE.

1512 S BATAVIA AVENUE
GENEVA, IL 60134
630-232-0104

Test Report

www.riverbankacoustics.com

FOUNDED 1918 BY
WALLACE CLEMENT SABINE

Sound Seal
2022-08-18

RAL™-A22-353
Page 7 of 7

APPENDIX B: Instruments of Traceability

Specimen: Aerial Exterior Grade Acoustical Baffle (See Full Report)

<u>Description</u>	<u>Model</u>	<u>Serial Number</u>	<u>Date of Certification</u>	<u>Calibration Due</u>
System 1	Type 3160-A-042	3160-106968	2022-07-12	2023-07-12
Bruel & Kjaer Mic And Preamp A	Type 4943-B-001	2311428	2021-09-30	2022-09-30
Bruel & Kjaer Pistonphone	Type 4228	2781248	2022-07-22	2023-07-22
EXTECH Hygro 959	SD700	A099959	2022-03-22	2023-03-22

APPENDIX C: Revisions to Original Test Report

Specimen: Aerial Exterior Grade Acoustical Baffle (See Full Report)

<u>Date</u>	<u>Revision</u>
2022-08-22	Original report issued

END

SPONSOR: **Sound Seal**
Agawam, MA

Report Referenced: **RAL™-A22-353**
Page 1 of 3

CONDUCTED: 2022-08-18

ON: Aerial Exterior Grade Acoustical Baffle (See Full Test Report for Details)

Appendix D to ASTM C423 Sound Absorption Test

Non-standard calculation of equivalent NRC Rating and Absorption Coefficients from spaced absorbers

At this time, ASTM C423 does not provide a standard method for determining absorption coefficients of spaced object absorbers. Tests of a set of sound absorbing objects spaced apart from each other will yield higher absorption rates than a specimen joined together as a single patch (A-Mount or E-Mount). For this reason it is unfair to provide NRC or absorption coefficient ratings for specimens that consist of a spaced set of absorbers. Despite this, the architectural industry has expressed great demand for a simple "single number" rating for these treatments. Likewise, acoustical consultants desire equivalent absorption coefficient data for use in acoustical modeling software. The following is an attempt to appease these demands until ASTM develops a standard method for calculation. Several alternate non-standard calculation methods are provided. Riverbank Acoustical Laboratories prefers method 1. Rating titles for these methods are prepended with the word "Apparent". These rating names and their associated acronyms are provided by RAL and shall not be misconstrued as originating from any current standard.

Method 1) Apparent Sound Absorption Coefficient calculated from extended test specimen envelope

The total sound absorption yielded by the specimen is divided by the surface area of the test surface covered by the suspended objects, including intermediate spaces, with additional added area to allow theoretical extrapolation for larger arrays. The object rigging covered 6.41 m² (69 ft²) of horizontal test surface area. With an extra 711 mm (28 in.) of width and 305 mm (12 in.) of length to account for the space between the tested array and what would be the next objects in a larger array, the total covered surface area comes to 9.29 m² (100 ft²). Apparent sound absorption coefficients, and subsequently the Apparent Noise Reduction Coefficient (A*NRC) and Apparent Sound Absorption Average (A*SAA) ratings, are calculated using this surface area based on the methods described in ASTM C423-17. This may be the most accurate method for comparing object arrays to ceiling tile products. The apparent sound absorption coefficient data can be assigned to a single horizontal surface or plane in acoustical modeling software for approximation of object array performance. Such approximations rely on the assumptions that object spacing is similar to that of the tested array across the entire surface, that gaps are negligibly small between adjacent rows of objects if the test specimen consists of a single row, and that the installation occurs over a perfectly reflective surface material.

Method 2) Apparent Sound Absorption Coefficient calculated from total exposed surface area of specimen

The total sound absorption yielded by the specimen is divided by the total surface area of all exposed specimen faces (1.67 m² (18 ft²) per object x 8 objects = 13.4 m² (144 ft²) total surface area). Apparent sound absorption coefficients, and subsequently the Apparent Noise Reduction Coefficient (A*NRC) and Apparent Sound Absorption Average (A*SAA) ratings, are calculated using this surface area based on the methods described in ASTM C423-17. This method shows the actual absorption occurring at the exposed surfaces but does not provide a fair comparison with materials mounted as a uniform patch (in A-mount or E-mount).

Appendix D (continued)

Method 3) Apparent Sound Absorption Coefficient calculated from one face per object

The total sound absorption yielded by the specimen is divided by the surface area of one side of one large face for each object in the specimen (0.743 m^2 (8 ft^2) per object x 8 objects = 5.95 m^2 (64 ft^2) total surface area). Apparent sound absorption coefficients, and subsequently the Apparent Noise Reduction Coefficient (A*NRC) and Apparent Sound Absorption Average (A*SAA) ratings, are calculated using this surface area based on the methods described in ASTM C423-17. This method is favored by some material manufacturers since it yields very high NRC figures, but does not provide a fair comparison with other ceiling tile or wall panel products. Riverbank Acoustical Laboratories recommends that results obtained from this method be used for research and comparison purposes only; such results should not be used for marketed claims of product performance.

Method 4) Apparent Sound Absorption Coefficient calculated from specimen envelope without extension

The total sound absorption yielded by the specimen is divided by the rectangular test surface area covered by the suspended objects, including intermediate spaces. The object rigging covered 6.41 m^2 (69 ft^2) of horizontal test surface area. Apparent sound absorption coefficients, and subsequently the Apparent Noise Reduction Coefficient (A*NRC) and Apparent Sound Absorption Average (A*SAA) ratings, are calculated using this surface area based on the methods described in ASTM C423-17. While similar in concept to Method 1, attempting to model any array larger than the tested specimen using these results would imply instances of adjacent objects with zero spacing scattered throughout the extrapolated array. Riverbank Acoustical Laboratories recommends that results obtained from this method be used for research and comparison purposes only; such results should not be used for marketed claims of product performance.

Sound Seal
2022-08-18


Report Referenced: **RAL™-A22-353**

Page 3 of 3

Appendix D: Data Note: See full test report for details of mounting position, spacing, and configuration, as these parameters greatly affect sound absorption performance.

Specimen Absorption (ft ²)			Method 1	Method 2	Method 3	Method 4
Freq. (Hz)	Sabins	Sabins / Object	Apparent Abs. Coefficient From Total Coverage Area (100 ft ²)	Apparent Abs. Coefficient From Total Exposed Surface Area (144 ft ²)	Apparent Abs. Coefficient From One Face per Object (64 ft ²)	Apparent Abs. Coefficient From Unextended Envelope Area (69 ft ²)
31.5	5.88	0.74	0.06	0.04	0.09	0.09
40	9.06	1.13	0.09	0.06	0.14	0.13
50	-25.69	-3.21	-0.26	-0.18	-0.40	-0.37
63	-7.81	-0.98	-0.08	-0.05	-0.12	-0.11
80	0.86	0.11	0.01	0.01	0.01	0.01
100	9.54	1.19	0.10	0.07	0.15	0.14
125	11.57	1.45	0.12	0.08	0.18	0.17
160	18.14	2.27	0.18	0.13	0.28	0.26
200	29.76	3.72	0.30	0.21	0.46	0.43
250	41.63	5.20	0.42	0.29	0.65	0.60
315	64.02	8.00	0.64	0.44	1.00	0.93
400	78.26	9.78	0.78	0.54	1.22	1.13
500	93.79	11.72	0.94	0.65	1.47	1.36
630	88.38	11.05	0.88	0.61	1.38	1.28
800	68.76	8.59	0.69	0.48	1.07	1.00
1,000	50.94	6.37	0.51	0.35	0.80	0.74
1,250	38.26	4.78	0.38	0.27	0.60	0.55
1,600	28.17	3.52	0.28	0.20	0.44	0.41
2,000	21.32	2.67	0.21	0.15	0.33	0.31
2,500	18.22	2.28	0.18	0.13	0.28	0.26
3,150	15.57	1.95	0.16	0.11	0.24	0.23
4,000	13.71	1.71	0.14	0.10	0.21	0.20
5,000	11.91	1.49	0.12	0.08	0.19	0.17
6,300	9.71	1.21	0.10	0.07	0.15	0.14
8,000	8.86	1.11	0.09	0.06	0.14	0.13
10,000	8.63	1.08	0.09	0.06	0.13	0.13
12,500	7.73	0.97	0.08	0.05	0.12	0.11
Apparent NRC:			0.50	0.35	0.80	0.75
Apparent SAA:			0.52	0.36	0.81	0.75

Prepared by



Keith Kimberling
Test Engineer